

ALMOST THERE TRAVEL

**FREE  
AIRFARE**

WHEN BOOKED BY  
12/31/2022



## Portugal and the Douro River Cruise

**Tour Dates:** October 4–14, 2023

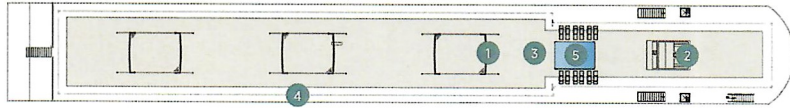
  
**Mayflower**  
CRUISES & TOURS  
A DIVISION OF THE SCENIC GROUP



# MS Emerald Radiance

Built: 2017 Speed: 15.5 mph Staterooms: 10 Suites: 46 Length: 292 ft. Crew: 37

## SUN DECK



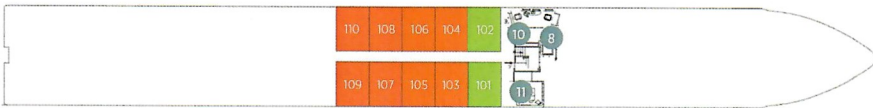
## HORIZON DECK



## VISTA DECK



## RIVIERA DECK



## Public Areas and Ship Amenities

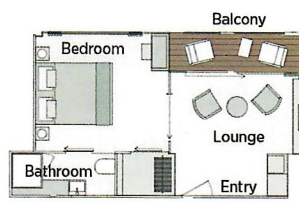
- ① Sun Deck with Deck Chairs
- ② Navigation Bridge
- ③ Sky Barbeque
- ④ Walking Track
- ⑤ Serenity Pool
- ⑥ The Terrace
- ⑦ Horizon Bar & Lounge
- ⑧ Elevator
- ⑨ Reception
- ⑩ Wellness Area
- ⑪ Fitness Area
- ⑫ Reflections Restaurant



### Emerald Riverview Suite

300ft²

CAT RA



### Owner's One-Bedroom Suite

285ft²

CAT SA



### Panorama Balcony Suite

160ft² – 180ft²

CAT B CAT C CAT R CAT A CAT P



### Emerald Stateroom

153ft² – 170ft²

CAT D CAT E

2023 Departure Date  
Portugal and the Douro River Cruise

		OCT 4	
CAT	STATEROOM / SUITE	DECK	
E	Emerald Stateroom	Riviera	\$5,555
D	Emerald Stateroom	Riviera	\$5,765
C	Panorama Balcony Suite	Vista	\$6,075
B	Panorama Balcony Suite	Vista	\$6,179
R	Panorama Balcony Suite	Vista	\$6,489
A	Panorama Balcony Suite	Horizon	\$6,855
P	Panorama Balcony Suite	Horizon	\$7,009
SA	Owner's One-Bedroom Suite	Horizon	\$7,479
RA	Riverview Suite	Horizon	\$7,585

**FREE** airfare from San Francisco (\$1650) when reservations are made by November 30<sup>th</sup>, 2022!

Beginning December 1<sup>st</sup>, please call for the updated air promo details!

**Pricing includes Roundtrip International Airport Transfers.**

Air itineraries may not be available until documents are received. Air seats are assigned by the airline for the entire group. Seat changes can only be attempted upon receipt of tickets and documents at which time availability may be limited. If specific seat assignments are vital to your reservation, we recommend individual air reservations rather than booking air with the group.

## Travelers Protection Plan (TPP) for River Cruises - \$569 per person (optional)

This nonrefundable fee will provide a refund to you during the instance that you have to cancel your trip. The cancellation has to be for a covered reason (see Plan for details on coverage) and we have to be notified at least one day prior to departure. If you must leave the tour early due to personal illness or the illness or death of an immediate family member, TPP will provide a refund for any unused services after the departure of the tour. Other benefits include medical expenses for illness and injury, emergency transportation, 24 hour hot line and lost or stolen baggage assistance. Return air transportation is included ONLY if your air tickets are purchased through Mayflower Cruises & Tours. Please review the Plan for details on coverage. Should you choose not to purchase our TPP, the following per person cancellation charges will be assessed for all tours and optional excursion costs:

- 91 days or more prior to departure: Deposit Amount
- 90 days to day of departure: 100% of total tour
- No refund on unused portions of the tour

## TOUR ACTIVITY LEVEL



**Exclusions:** Mayflower Cruises & Tours reserves the right to alter its Refund and Cancellation Policy when a substantial amount of cancellation or postponement of travel is attributable to: conditions resulting from an act of God, natural or man-made disaster, fire, government action, civil disorder, war, hostilities between nations, or unavailability of transportation through no fault of Mayflower Cruises & Tours. Plan and benefits offered and administered by Trip Mate, Inc.

FOR RESERVATIONS OR INFORMATION CONTACT:

**Tammy Larsen**  
**Almost There Travel**  
**925-238-0001**  
**paradice95@comcast.net**





# Portugal and the Douro River Cruise



Experience the cosmopolitan charm of Lisbon, Portugal



Feel the rhythm of the city in the Plaza Mayor, Salamanca, Spain

**DAY 1 Depart the USA:** Depart the USA on your overnight flight to Lisbon, Portugal.

**DAY 2 Lisbon, Portugal:** Upon arrival, you'll be met by a representative of Mayflower Cruises & Tours and transferred to your hotel. The remainder of the day is at your leisure to explore Lisbon. This evening, join your Mayflower staff and fellow travelers for an included dinner. **Meal: D**

**DAY 3 Lisbon:** After breakfast, an included tour highlights the famous sites of the city. During a panoramic coach tour, see 'Monument to the Discoveries,' and Belem Tower, a UNESCO World Heritage Site. Visit Jerónimos Monastery and discover the unique architecture and history. Enjoy a free afternoon to shop, dine and experience this cosmopolitan city on your own. **Meal: B**

**DAY 4 Fátima – Coimbra – Porto:** Depart Lisbon by coach and journey to the ship in Porto. Enroute, visit Fatima, home to the Sanctuary of Fátima, an important Catholic pilgrimage site. The city's fame originates from the apparitions of Our Lady of the Rosary that appeared to three shepherd children in the nearby fields. Continue to Coimbra and its famous university before arriving in Porto to embark the *MS Emerald Radiance*, home for the next seven nights. **Meals: B, D**

**DAY 5 Porto – Pinhão:** Today is a day of sailing through the twists and turns of the Douro Valley. Designated a UNESCO World Heritage Site, this area is sparsely populated by quaint villages, sun-drenched vineyards and small farms. Later today, arrive in the village of Pinhão, perfectly situated on a river bend surrounded by terraced hillsides that produce some of the world's best Port wine. Tonight, enjoy a welcome reception and dinner. **Meals: B, L, D**

**EmeraldPLUS:** A Portuguese cooking demonstration onboard

**DAY 6 Pinhão – Vega de Terrón:** Begin the day with a visit to the beautiful 18th-century estate of Quinta do Tedo Vineyard with spectacular views of the Douro Valley. Learn about wine production, its importance to the culture and economy, and enjoy a tasting of the local vintage. This afternoon, the ship sails for Vega de Terrón, gateway to Spain. **Meals: B, L, D**

**EmeraldACTIVE:** A guided walk through the vineyards\*

**EmeraldACTIVE:** Kayak experience in Pinhão\*

\*The included tour and both active tours all operate simultaneously. Only one can be selected.

**DAY 7 Salamanca, Spain:** Today's excursion takes you to the UNESCO World Heritage Site of Salamanca, Spain. During the guided walking tour, see amazingly detailed and intricately carved buildings of the university and the House of Shells. Regal splendor abounds in the Plaza Mayor, the heartbeat of the city. Visit the market and taste the local products including cheese, olives and bread. You'll have free time for lunch and to explore independently before returning to the ship in Portugal. **Meals: B, D**

**EmeraldPLUS:** Entertainment by a Tuna music band in Salamanca

**DiscoverMORE:** Tour of Castelo Rodrigo (instead of city tour to Spain – additional expense)

**DAY 8 Pocinho / Régua, Portugal:** Arrive in Pocinho and disembark for a morning tour to the Côa Valley Museum. Designed to blend in with its surroundings, the museum's concrete structure houses prehistoric stone carvings made by the early inhabitants of the Douro which were uncovered during construction of a nearby dam project. Return to the ship for lunch and relax on deck as the ship sails through idyllic surroundings on the way to Régua. This evening, enjoy an off-ship dinner at a traditional vineyard estate. **Meals: B, L, D**

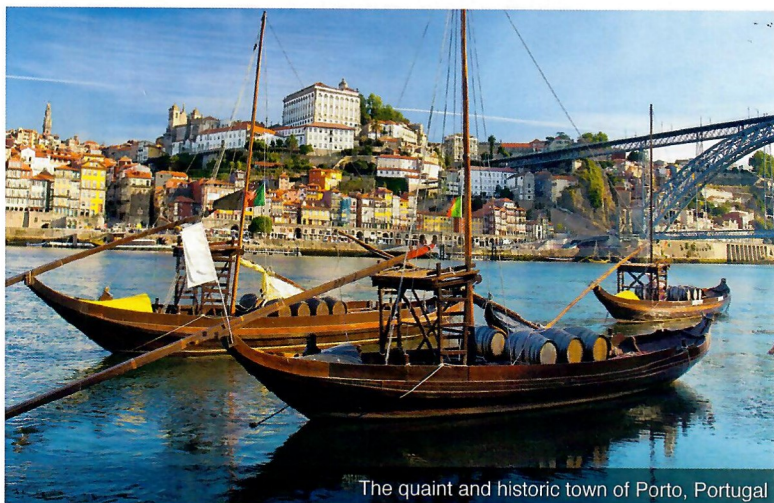
**DiscoverMORE:** Archaeological 4x4 Tour at Côa Museum (additional expense)

\*The included tour and DiscoverMORE operate at the same time.

**EmeraldPLUS:** Port wine cocktail lesson onboard

**EmeraldPLUS:** Dinner at a vineyard estate





The quaint and historic town of Porto, Portugal

**DAY 9 Régua – Lamego:** From Régua, journey to the marvelous baroque village of Lamego, home to the Sanctuary of Our Lady of Remedies - one of the most important pilgrimage sites in Portugal. Visit the Sanctuary perched atop the hill, with its iconic 686-step granite staircase, decorated with the traditional Portuguese blue and white 'azulejos' tiles. During a guided walk through the village, learn about the importance of wine production to the local area. Return to the ship in Régua after the excursion. **Meals: B, L, D**

**EmeraldACTIVE:** Walk down the stairs of the Sanctuary

**DiscoverMORE:** Visit to Mateus Manor House (additional expense)

This tour operates at the same time as the included visit of Lamego.

**EmeraldPLUS:** Mosaic tile painting lesson onboard

**DAY 10 Porto:** Having traversed the Douro River, the ship returns to Porto – a city with an eclectic mix of modern and ancient architecture. An included tour highlights the sights from its scenic beauty to the historic landmarks of the Castelo da Foz and Castelo do Queijo. The remainder of the afternoon is at leisure in Porto. **Meals: B, L, D**

**EmeraldACTIVE:** A guided walking tour of Porto (instead of included tour)

**DiscoverMORE\*:** Guided bike tour to the Atlantic Ocean (additional expense)

**DiscoverMORE\*:** Visit to Quinta do Aveleda with Vinho Verde tasting (additional expense)

**DiscoverMORE\*:** Taylor's Port Wine tasting (additional expense)

**EmeraldPLUS:** Evening cruise through Porto's enchanting waters

\* the DiscoverMORE's operate at the same time; only one can be selected.

**DAY 11 Porto / USA:** This morning, disembark the *MS Emerald Radiance* and bid a fond farewell to Portugal, filled with memories of this remarkable cruise along the 'River of Gold.' **Meal: B**

Itinerary is subject to change.



## Exceptional Inclusions

- **22 Meals:** 9 breakfasts, 5 lunches and 8 dinners
- **Airport transfers** on tour dates when air is provided by Mayflower Cruises & Tours
- **Visit two countries**
- Two-night **hotel stay and touring** in Lisbon, Portugal before cruising
- **Seven-night cruise** on the *Emerald Radiance*
- **First-class service** by an English-speaking crew
- **Onboard Activity Manager** will support all EmeraldACTIVE excursions and host daily onboard wellness activities, games, classes and evening entertainment
- **Shore excursions** with English-speaking **local guides**
- All **gratuities** included
- Personal **listening device** for onboard excursions
- Many meals included onboard with a **variety of international cuisine**
- Complimentary **regional wines, beer and soft drinks** accompany onboard lunches and dinners
- Complimentary **bottled water** in your stateroom
- Complimentary **WiFi onboard**
- Variety of **onboard evening entertainment**

## CRUISE AND HOTEL ACCOMMODATIONS

**Days 2 and 3** – Avani Hotel or similar, Lisbon, Portugal

**Days 4 through 10** – Aboard the *MS Emerald Radiance*