



▶ **TRUSTEE AREA  
SCENARIOS**

ANTIOCH UNIFIED SCHOOL DISTRICT

DECEMBER 15, 2021



**COOPERATIVE  
STRATEGIES**  
ASSESS • PLAN • FUND • BUILD

▶ TRUSTEE AREA PROCESS

DATE	ACTIVITY
<b>November 10, 2021</b>	<b>Board Meeting: Presentation on Evaluation of Existing Voting Areas Receive Input on Potential Adjustments</b>
November 2021	Cooperative Strategies prepares potential maps of adjusted Voting Areas
December 8, 2021	Draft Maps Posted to Antioch Unified School District’s Website
<b>December 15, 2021</b>	<b>Board Meeting: Public Hearing to Review Initial Scenarios</b>
January 2022	Cooperative Strategies revises scenarios based on Board and Public Input
<b>January 26, 2022</b>	<b>Board Meeting: Review Revised and/or Additional Scenarios; Adopt Final Trustee Areas (Tentative)</b>
January/February 2022	(Only if needed) Cooperative Strategies revises scenarios based on Board and Public Input,
<b>February 9 or 23, 2022</b>	<b>Board Meeting: (Only If Needed) Adopt Final Trustee Areas</b>
By March 1, 2022	Cooperative Strategies sends Final Trustee Areas Map to the County Registrars of Voters.

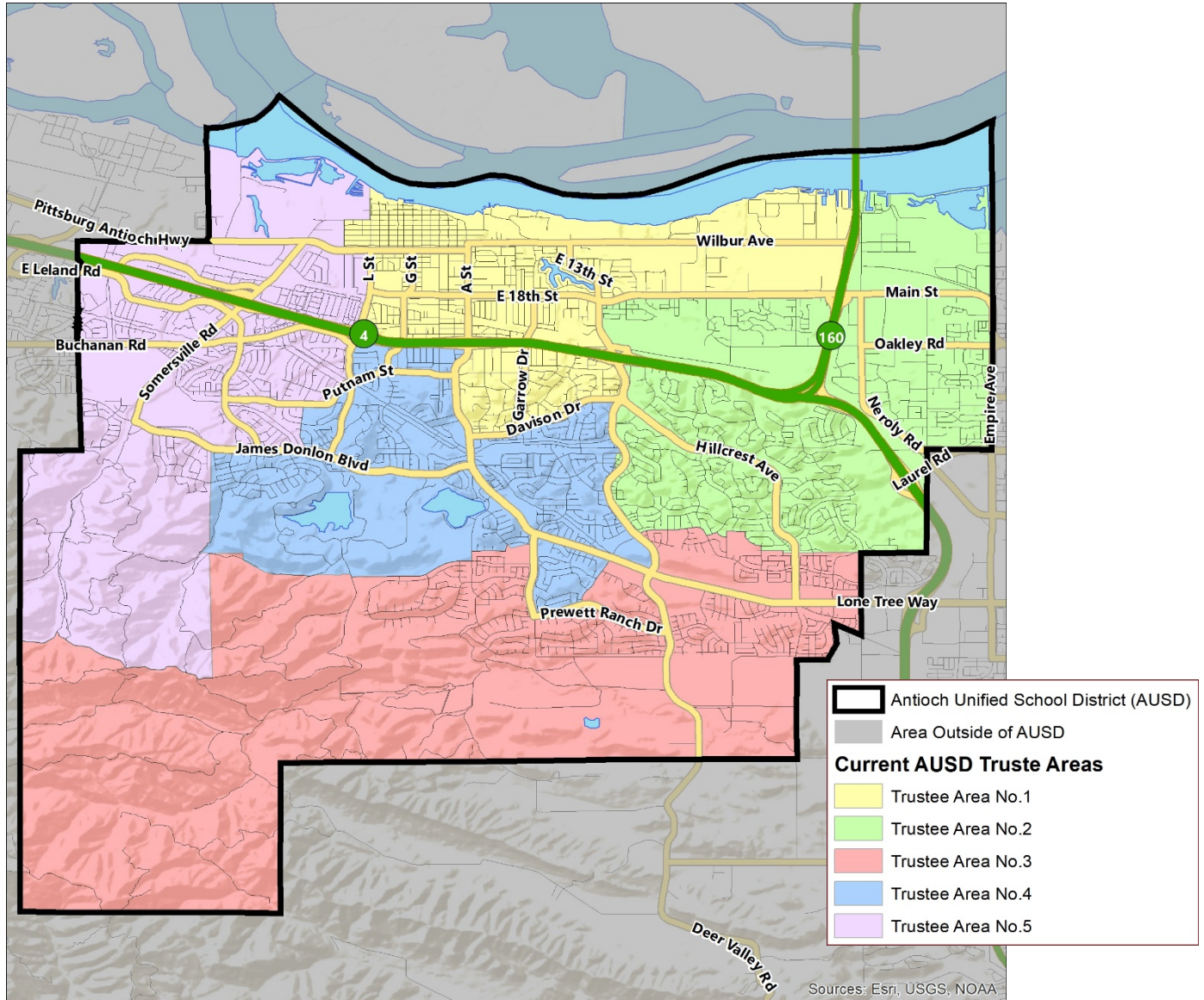
▶ **DISTRICT DEMOGRAPHICS**  
**2020 CENSUS DATA**



- Validated redistricting data was finalized by the California Department of Finance on September 27, 2021.
- This data showed substantial changes in the area served by Antioch Unified School District (“AUSD”) from 2010 to 2020, including:
  - Overall population growth of over 13,000 (12.4%)
  - Total Variance of 17.7% based on 2020 Census (*Out of Compliance*)

Trustee Area	2010 Census		2020 Census		Change	
	Total	Variance	Total	Variance	Population	Percent
Trustee Area 1	22,507	5.1%	25,002	3.9%	2,495	11.1%
Trustee Area 2	21,783	1.8%	26,247	9.1%	4,464	20.5%
Trustee Area 3	20,693	-3.3%	22,001	-8.5%	1,308	6.3%
Trustee Area 4	20,883	-2.4%	23,006	-4.4%	2,123	10.2%
Trustee Area 5	21,170	-1.1%	24,032	-0.1%	2,862	13.5%
<b>Total Population</b>	<b>107,036</b>	<b>8.5%</b>	<b>120,288</b>	<b>17.7%</b>	<b>13,252</b>	<b>12.4%</b>

▶ CURRENT TRUSTEE AREAS



## ► CURRENT TRUSTEE AREAS

Census 2020 Total Population:	120,288		Ideal Trustee Area Size:	24,058		Total Variance:	17.7%			
TRUSTEE AREA	Trustee Area 1		Trustee Area 2		Trustee Area 3		Trustee Area 4		Trustee Area 5	
TP* vs. CVAP**	TP	CVAP	TP	CVAP	TP	CVAP	TP	CVAP	TP	CVAP
Population	25,002	<b>14,248</b>	26,247	<b>16,548</b>	22,001	<b>14,889</b>	23,006	<b>16,795</b>	24,032	<b>14,246</b>
Population Variance	3.9%	<b>N/A</b>	9.1%	<b>N/A</b>	-8.5%	<b>N/A</b>	-4.4%	<b>N/A</b>	-0.1%	<b>N/A</b>
Hispanic/Latino	46.2%	<b>26.5%</b>	32.6%	<b>25.4%</b>	28.4%	<b>24.0%</b>	34.5%	<b>27.7%</b>	40.1%	<b>24.5%</b>
White	26.8%	<b>44.8%</b>	25.9%	<b>41.2%</b>	18.1%	<b>24.3%</b>	28.8%	<b>38.5%</b>	19.0%	<b>34.0%</b>
Black/African American	15.4%	<b>18.8%</b>	18.3%	<b>16.3%</b>	25.1%	<b>25.5%</b>	17.7%	<b>19.2%</b>	23.1%	<b>27.5%</b>
American Indian/Alaska Native	0.5%	<b>1.1%</b>	0.3%	<b>0.1%</b>	0.3%	<b>0.1%</b>	0.5%	<b>0.1%</b>	0.3%	<b>0.2%</b>
Asian	4.5%	<b>4.2%</b>	15.3%	<b>12.2%</b>	19.8%	<b>17.4%</b>	11.1%	<b>9.0%</b>	10.4%	<b>9.2%</b>
Native Hawaiian/Other Pacific Islander	0.9%	<b>0.3%</b>	1.0%	<b>0.9%</b>	1.3%	<b>1.9%</b>	1.2%	<b>0.4%</b>	1.6%	<b>0.3%</b>
Other	0.7%	<b>N/A</b>	0.7%	<b>N/A</b>	0.9%	<b>N/A</b>	0.7%	<b>N/A</b>	0.6%	<b>N/A</b>
Two or More Races	5.0%	<b>4.2%</b>	5.9%	<b>3.9%</b>	6.1%	<b>6.8%</b>	5.4%	<b>5.1%</b>	4.8%	<b>4.3%</b>

\*Total Population; Source: Redistricting Database for California, Published by Statewide Database on September 27, 2021

\*\*Citizen Voting Age Population (CVAP); Source: American Community Survey, 2015-2019 Data

## ▶ CONSIDERATIONS IN TRUSTEE AREAS



Each area shall contain nearly equal number of inhabitants



Follow man-made and natural geographic features, as much as possible



Drawn to comply with the Federal Voting Rights Act



Respect incumbency, if possible



Compact and contiguous, as much as possible

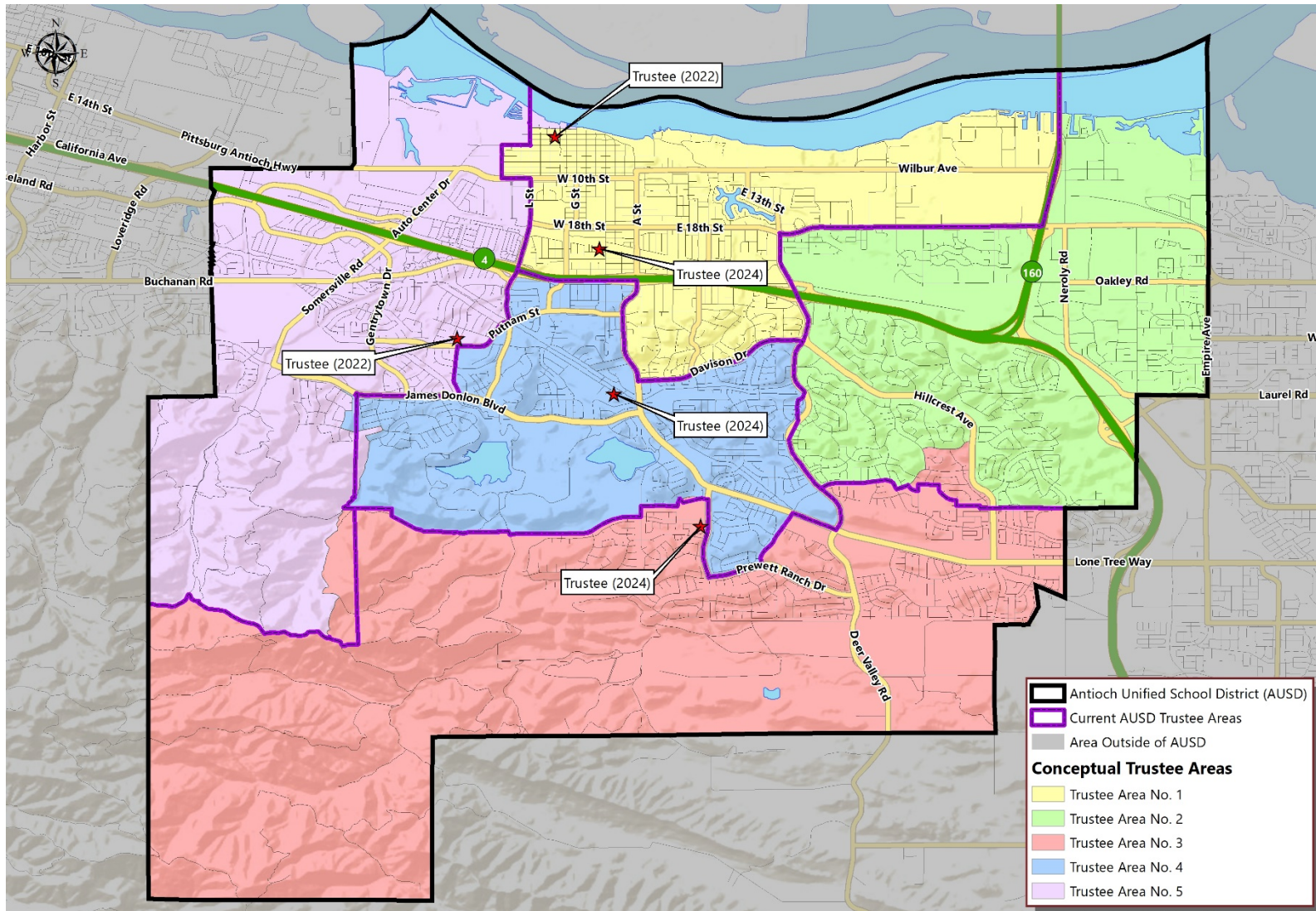


Other local considerations (i.e., school boundaries, locations of school sites)



Respect communities of interest, as much as possible

# ▶ CONCEPTUAL TRUSTEE AREAS SCENARIO 1



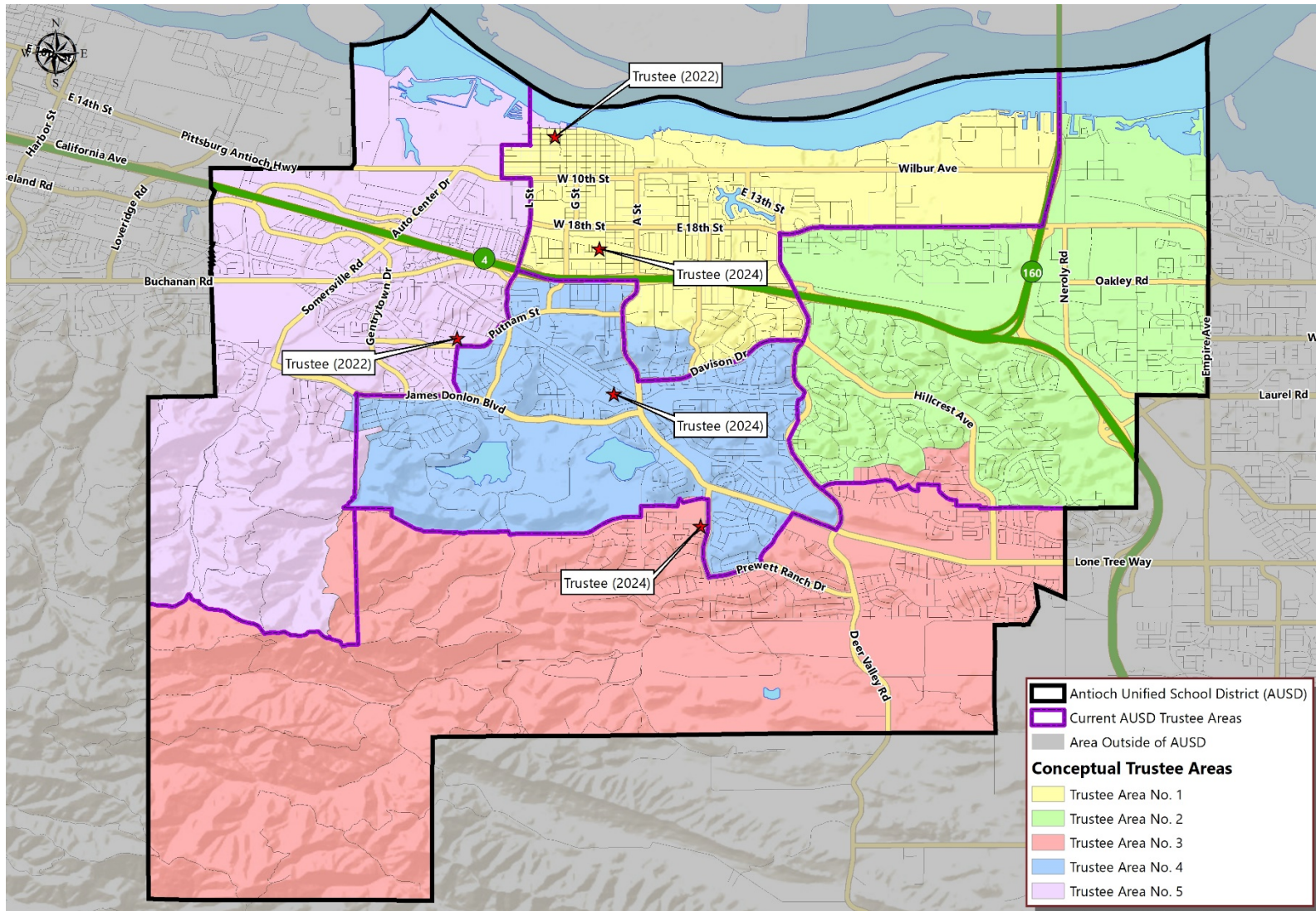
► **DEMOGRAPHICS**  
**SCENARIO 1**

<b>Total Population:</b>	120,288	<b>Ideal Trustee Area Size:</b>	24,058	<b>Variance:</b>	8.3%
--------------------------	---------	---------------------------------	--------	------------------	------

<b>TRUSTEE AREA</b>	<b>Trustee Area 1</b>		<b>Trustee Area 2</b>		<b>Trustee Area 3</b>		<b>Trustee Area 4</b>		<b>Trustee Area 5</b>	
<b>TP* vs. CVAP**</b>	<b>TP</b>	<b>CVAP</b>	<b>TP</b>	<b>CVAP</b>	<b>TP</b>	<b>CVAP</b>	<b>TP</b>	<b>CVAP</b>	<b>TP</b>	<b>CVAP</b>
Population	25,002	<b>14,248</b>	24,712	<b>15,511</b>	23,536	<b>15,926</b>	23,006	<b>16,795</b>	24,032	<b>14,246</b>
Population Variance	3.9%	<b>N/A</b>	2.7%	<b>N/A</b>	-2.2%	<b>N/A</b>	-4.4%	<b>N/A</b>	-0.1%	<b>N/A</b>
Hispanic/Latino	46.2%	<b>26.5%</b>	32.5%	<b>25.5%</b>	28.9%	<b>23.9%</b>	34.5%	<b>27.7%</b>	40.1%	<b>24.5%</b>
White	26.8%	<b>44.8%</b>	26.5%	<b>41.9%</b>	18.1%	<b>24.7%</b>	28.8%	<b>38.5%</b>	19.0%	<b>34.0%</b>
Black/African American	15.4%	<b>18.8%</b>	18.1%	<b>15.4%</b>	24.9%	<b>25.8%</b>	17.7%	<b>19.2%</b>	23.1%	<b>27.5%</b>
American Indian/Alaska Native	0.5%	<b>1.1%</b>	0.3%	<b>0.1%</b>	0.3%	<b>0.1%</b>	0.5%	<b>0.1%</b>	0.3%	<b>0.2%</b>
Asian	4.5%	<b>4.2%</b>	15.3%	<b>12.4%</b>	19.5%	<b>16.9%</b>	11.1%	<b>9.0%</b>	10.4%	<b>9.2%</b>
Native Hawaiian/Other Pacific Islander	0.9%	<b>0.3%</b>	1.0%	<b>1.0%</b>	1.4%	<b>1.8%</b>	1.2%	<b>0.4%</b>	1.6%	<b>0.3%</b>
Other	0.7%	<b>0.0%</b>	0.6%	<b>0.0%</b>	0.9%	<b>0.0%</b>	0.7%	<b>0.0%</b>	0.6%	<b>0.0%</b>
Two or More Races	5.0%	<b>4.2%</b>	5.9%	<b>3.8%</b>	6.0%	<b>6.7%</b>	5.4%	<b>5.1%</b>	4.8%	<b>4.3%</b>



# ▶ CONCEPTUAL TRUSTEE AREAS SCENARIO 2



► DEMOGRAPHICS  
SCENARIO 2

Total Population:	120,288	Ideal Trustee Area Size:	24,058	Variance:	1.8%
-------------------	---------	--------------------------	--------	-----------	------

TRUSTEE AREA	Trustee Area 1		Trustee Area 2		Trustee Area 3		Trustee Area 4		Trustee Area 5	
TP* vs. CVAP**	TP	CVAP	TP	CVAP	TP	CVAP	TP	CVAP	TP	CVAP
Population	23,789	<b>12,745</b>	24,038	<b>15,092</b>	24,210	<b>16,345</b>	24,219	<b>18,298</b>	24,032	<b>14,246</b>
Population Variance	-1.1%	<b>N/A</b>	-0.1%	<b>N/A</b>	0.6%	<b>N/A</b>	0.7%	<b>N/A</b>	-0.1%	<b>N/A</b>
Hispanic/Latino	46.8%	<b>27.9%</b>	32.5%	<b>25.5%</b>	29.0%	<b>24.0%</b>	34.5%	<b>26.7%</b>	40.1%	<b>24.5%</b>
White	26.4%	<b>43.5%</b>	26.7%	<b>42.0%</b>	18.1%	<b>25.0%</b>	29.1%	<b>40.0%</b>	19.0%	<b>34.0%</b>
Black/African American	15.2%	<b>18.4%</b>	17.8%	<b>15.2%</b>	24.9%	<b>25.7%</b>	17.8%	<b>19.4%</b>	23.1%	<b>27.5%</b>
American Indian/Alaska Native	0.5%	<b>1.2%</b>	0.3%	<b>0.1%</b>	0.3%	<b>0.1%</b>	0.5%	<b>0.1%</b>	0.3%	<b>0.2%</b>
Asian	4.4%	<b>4.6%</b>	15.4%	<b>12.4%</b>	19.3%	<b>16.7%</b>	10.8%	<b>8.4%</b>	10.4%	<b>9.2%</b>
Native Hawaiian/Other Pacific Islander	1.0%	<b>0.3%</b>	0.9%	<b>1.0%</b>	1.4%	<b>1.7%</b>	1.2%	<b>0.4%</b>	1.6%	<b>0.3%</b>
Other	0.7%	<b>0.0%</b>	0.6%	<b>0.0%</b>	0.9%	<b>0.0%</b>	0.8%	<b>0.0%</b>	0.6%	<b>0.0%</b>
Two or More Races	5.1%	<b>4.1%</b>	5.8%	<b>3.7%</b>	6.1%	<b>6.7%</b>	5.3%	<b>5.1%</b>	4.8%	<b>4.3%</b>



QUESTIONS

A row of yellow school buses is parked in a grassy field. The buses are slightly out of focus, and the scene is overlaid with a large, semi-transparent, stylized letter 'S' graphic. The word 'QUESTIONS' is written in white, bold, sans-serif capital letters across the center of the 'S'.