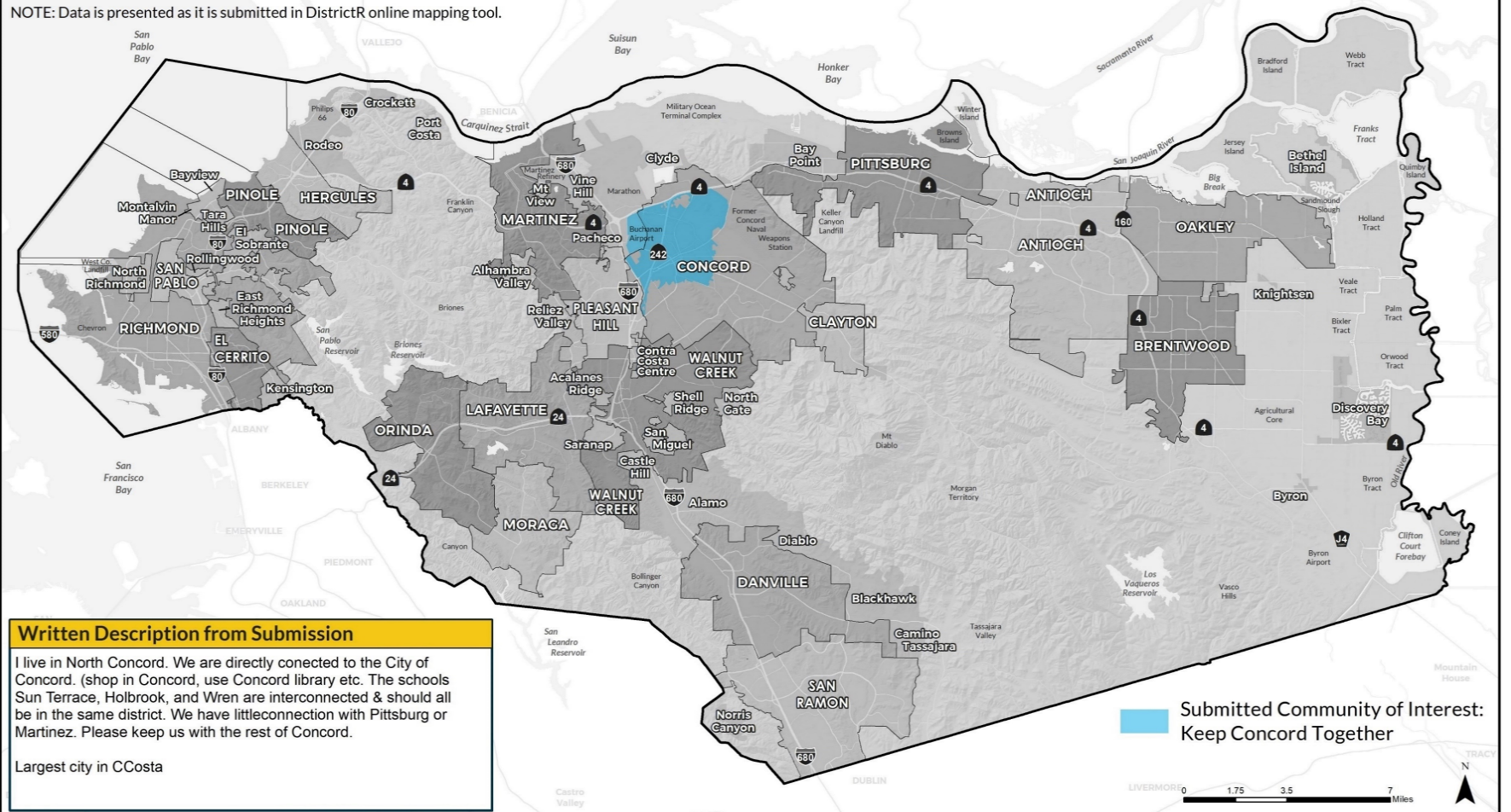


# CONTRA COSTA COUNTY

Community of Interest Submission c6054  
Keep Concord Together

NOTE: Data is presented as it is submitted in DistrictR online mapping tool.



## Written Description from Submission

I live in North Concord. We are directly connected to the City of Concord. (shop in Concord, use Concord library etc. The schools Sun Terrace, Holbrook, and Wren are interconnected & should all be in the same district. We have little connection with Pittsburg or Martinez. Please keep us with the rest of Concord.

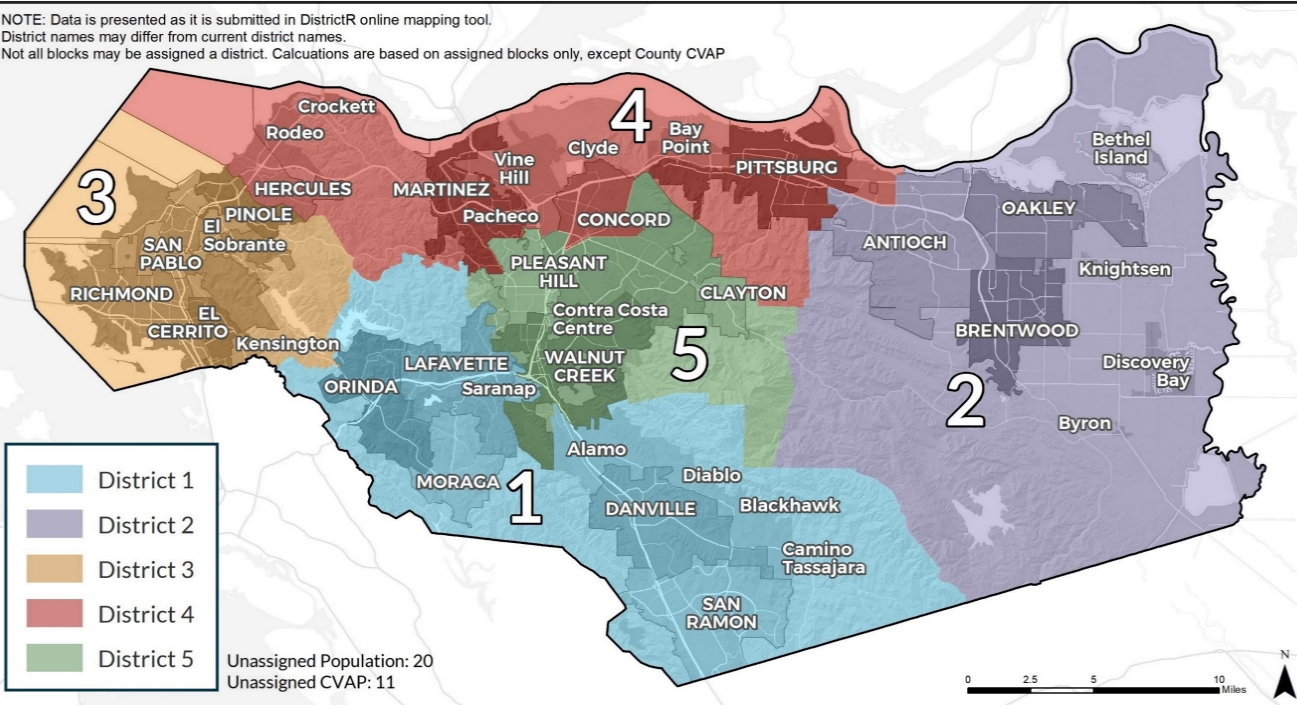
Largest city in CCosta

Prepared by the Department of Conservation and Development - GIS Group for the November 9, 2021 Board of Supervisors Public Hearing.  
Data Source: DistrictR Online Mapping tool submissions

# CONTRA COSTA COUNTY

Community Submission p5839  
Contra Costa Herald proposed map - Overview Map and Data

NOTE: Data is presented as it is submitted in DistrictR online mapping tool.  
District names may differ from current district names.  
Not all blocks may be assigned a district. Calculations are based on assigned blocks only, except County CVAP



Unassigned Population: 20  
Unassigned CVAP: 11

Prepared by the Department of Conservation and Development - GIS Group for the November 9th, 2021 Board of Supervisors Public Hearing.  
Data Source: 2021 California State Redistricting Data, Adjusted P.L 94-171 Redistricting Data and block level Citizen Voting Age Population (CVAP), DistrictR online mapping submissions

## Demographic Analysis Race and Ethnicity by District

Total Population - Race and Ethnicity						
	Total	Latino	White	Black	Asian	Other
District 1	232,158	19,252 8.3%	123,716 53.3%	3,724 1.6%	69,692 30.0%	15,774 6.8%
District 2	232,453	73,710 31.7%	84,836 36.5%	28,613 12.3%	27,430 11.8%	17,864 7.7%
District 3	235,996	95,002 40.3%	51,361 21.8%	33,300 14.1%	40,757 17.3%	15,576 6.6%
District 4	234,517	82,189 35.0%	68,117 29.0%	26,723 11.4%	40,691 17.4%	16,797 7.2%
District 5	232,925	45,269 19.4%	127,847 54.9%	6,632 2.8%	35,975 15.4%	17,202 7.4%
County	1,168,049	315,422 27.0%	455,877 39.0%	98,992 8.5%	214,545 18.4%	83,213 7.1%

Citizen Voting Age Population (CVAP) Race and Ethnicity						
	Total	Latino	White	Black	Asian	Other
District 1	148,937	9,713 6.5%	102,427 68.8%	2,350 1.6%	29,904 20.1%	4,543 3.1%
District 2	154,232	35,534 23.0%	75,590 49.0%	20,714 13.4%	14,720 9.5%	7,674 5.0%
District 3	140,259	35,136 25.1%	45,392 32.4%	27,282 19.5%	26,035 18.6%	6,414 4.6%
District 4	150,407	36,059 24.0%	63,763 42.4%	18,277 12.2%	24,779 16.5%	7,529 5.0%
District 5	167,219	21,271 12.7%	113,922 68.1%	5,060 3.0%	20,158 12.1%	6,808 4.1%
County	761,054	137,713 18.1%	401,094 52.7%	73,683 9.7%	115,596 15.2%	32,968 4.3%

### Concept Total Variation

**1.64%**

#### 2021 Population

Population: 1,168,069  
Equal Distribution: 233,614  
Citizen Voting Age Population (CVAP): 761,065

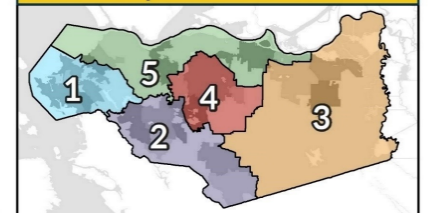
### Population by District

District	Population	Variance	Percent
District 1	232,158	(1,455)	-0.62%
District 2	232,453	(1,160)	-0.50%
District 3	235,996	2,383	1.02%
District 4	234,517	904	0.39%
District 5	232,925	(688)	-0.29%

### Written Description from Submission

This map creates districts with the least population deviation while also respecting both city boundaries, except for two of three largest, Concord and Antioch, as well as unincorporated communities. It keeps all of the San Ramon Valley communities together unlike the current districts, and the districts are as compact as possible. In the cases of the split cities, in general, it uses major streets as the dividing lines.

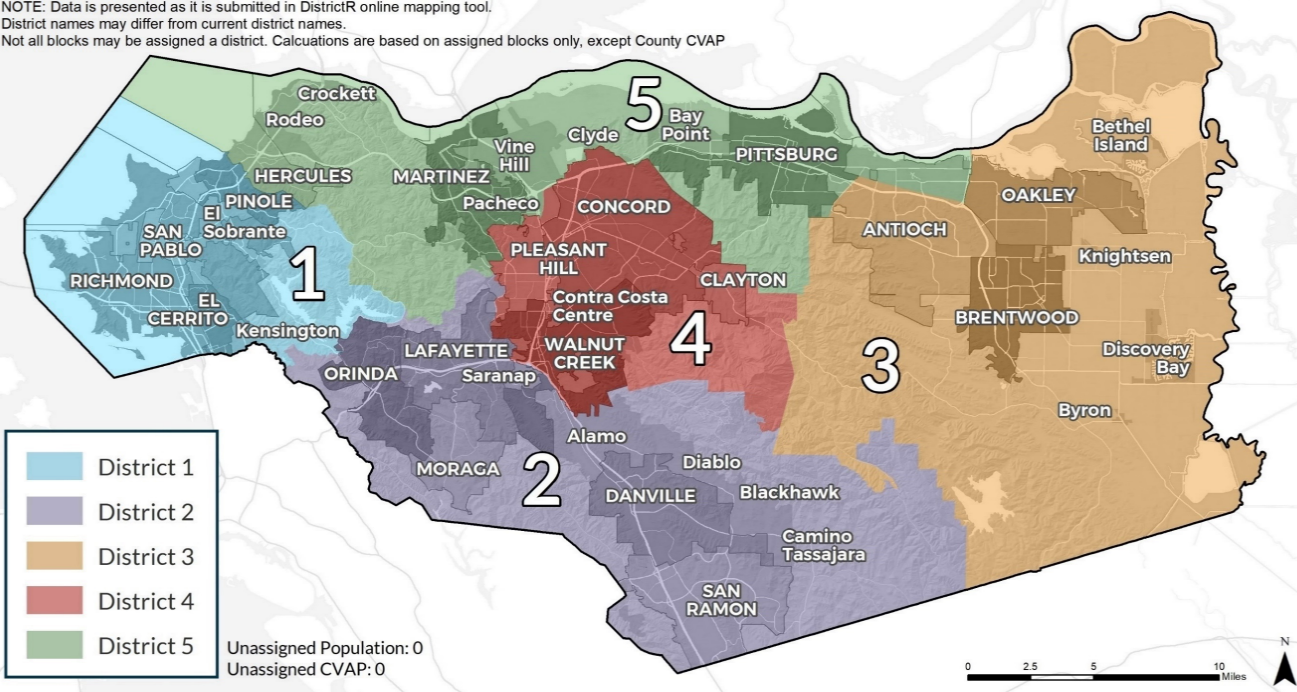
### Current Supervisorial Boundaries



# CONTRA COSTA COUNTY

Community Submission p6261  
Concord Whole Variant Staff 5 with 7.3% - Overview Map and Data

NOTE: Data is presented as it is submitted in DistrictR online mapping tool.  
District names may differ from current district names.  
Not all blocks may be assigned a district. Calculations are based on assigned blocks only, except County CVAP



## Demographic Analysis Race and Ethnicity by District

Total Population - Race and Ethnicity						
	Total	Latino	White	Black	Asian	Other
District 1	236,024	95,007 40.3%	51,371 21.8%	33,307 14.1%	40,760 17.3%	15,579 6.6%
District 2	244,847	19,790 8.1%	133,513 54.5%	3,878 1.6%	71,376 29.2%	16,290 6.7%
District 3	222,815	69,646 31.3%	81,584 36.6%	27,937 12.5%	26,368 11.8%	17,280 7.8%
District 4	247,819	53,950 21.8%	129,832 52.4%	7,484 3.0%	37,635 15.2%	18,918 7.6%
District 5	216,564	77,032 35.6%	59,581 27.5%	26,393 12.2%	38,409 17.7%	15,149 7.0%
County	1,168,069	315,425 27.0%	455,881 39.0%	98,999 8.5%	214,548 18.4%	83,216 7.1%

Citizen Voting Age Population (CVAP) Race and Ethnicity						
	Total	Latino	White	Black	Asian	Other
District 1	140,278	35,140 25.1%	45,403 32.4%	27,283 19.4%	26,038 18.6%	6,414 4.6%
District 2	160,663	9,963 6.2%	112,506 70.0%	2,540 1.6%	31,021 19.3%	4,633 2.9%
District 3	147,381	33,442 22.7%	71,901 48.8%	20,207 13.7%	14,292 9.7%	7,539 5.1%
District 4	174,811	25,594 14.6%	115,296 66.0%	5,363 3.1%	21,060 12.0%	7,498 4.3%
District 5	137,932	33,577 24.3%	55,992 40.6%	18,291 13.3%	23,188 16.8%	6,884 5.0%
County	761,065	137,716 18.1%	401,098 52.7%	73,684 9.7%	115,599 15.2%	32,968 4.3%

Prepared by the Department of Conservation and Development - GIS Group for the November 9th, 2021 Board of Supervisors Public Hearing.  
Data Source: 2021 California State Redistricting Data, Adjusted P.L. 94-171 Redistricting Data and block level Citizen Voting Age Population (CVAP), DistrictR online mapping submissions

**Concept Total Variation**

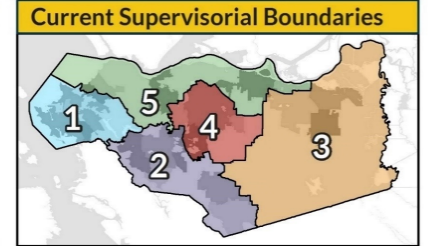
# 13.38%

**2021 Population**  
Population: 1,168,069  
Equal Distribution: 233,614  
Citizen Voting Age Population (CVAP): 761,065

District	Population	Variance	Percent
District 1	236,024	2,411	1.03%
District 2	244,847	11,234	4.81%
District 3	222,815	(10,798)	-4.62%
District 4	247,819	14,206	6.08%
District 5	216,564	(17,049)	-7.30%

**Written Description from Submission**

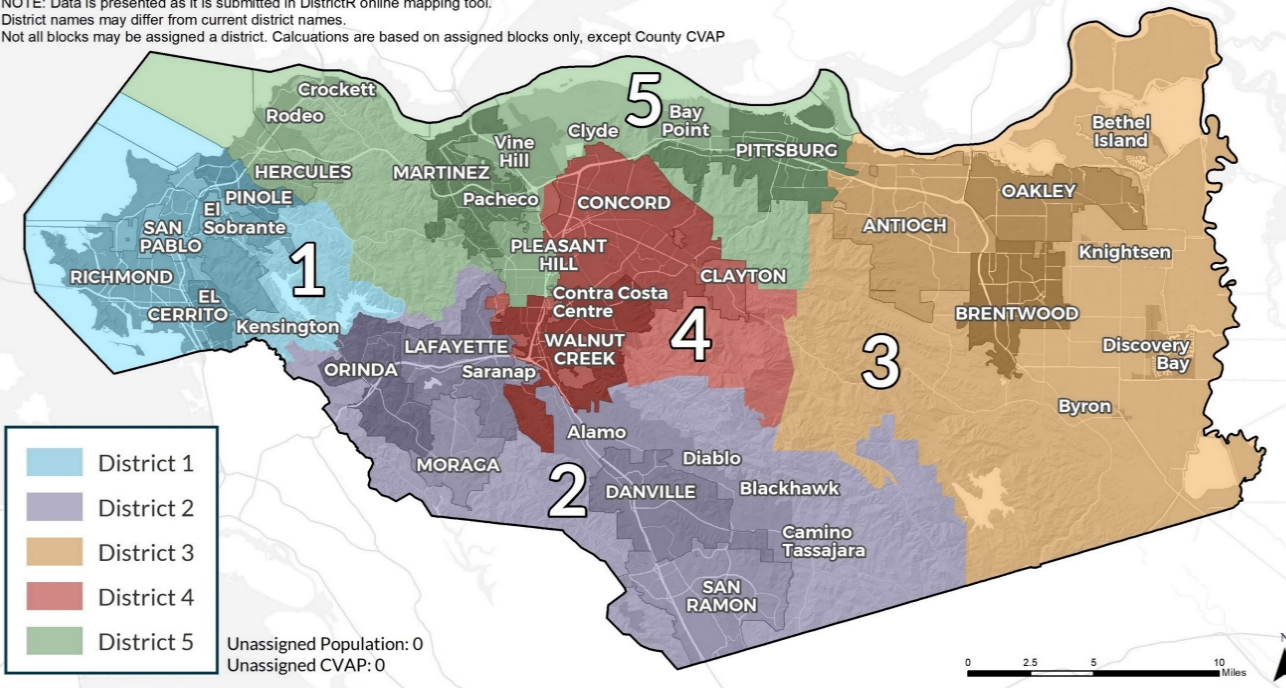
This proves that Concord can be kept as a whole city which is by definition a Community of Interest without going over the 10% variation. In fact it is only 7.3%



# CONTRA COSTA COUNTY

Community Submission p6263  
All Cities whole V2 6.2% variance - Overview Map and Data

NOTE: Data is presented as it is submitted in DistrictR online mapping tool.  
District names may differ from current district names.  
Not all blocks may be assigned a district. Calculations are based on assigned blocks only, except County CVAP



## Demographic Analysis Race and Ethnicity by District

Total Population - Race and Ethnicity						
	Total	Latino	White	Black	Asian	Other
District 1	236,024	95,007 40.3%	51,371 21.8%	33,307 14.1%	40,760 17.3%	15,579 6.6%
District 2	233,984	19,334 8.3%	125,076 53.5%	3,741 1.6%	69,912 29.9%	15,921 6.8%
District 3	248,091	81,088 32.7%	87,789 35.4%	32,128 13.0%	28,025 11.3%	19,061 7.7%
District 4	223,444	49,413 22.1%	117,053 52.4%	6,721 3.0%	33,809 15.1%	16,448 7.4%
District 5	226,526	70,583 31.2%	74,592 32.9%	23,102 10.2%	42,042 18.6%	16,207 7.2%
County	1,168,069	315,425 27.0%	455,881 39.0%	98,999 8.5%	214,548 18.4%	83,216 7.1%

Citizen Voting Age Population (CVAP) Race and Ethnicity						
	Total	Latino	White	Black	Asian	Other
District 1	140,278	35,140 25.1%	45,403 32.4%	27,283 19.4%	26,038 18.6%	6,414 4.6%
District 2	150,476	9,748 6.5%	103,736 68.9%	2,378 1.6%	30,049 20.0%	4,565 3.0%
District 3	161,832	37,501 23.2%	78,248 48.4%	22,741 14.1%	15,133 9.4%	8,209 5.1%
District 4	159,091	22,361 14.1%	105,964 66.6%	4,889 3.1%	19,456 12.2%	6,421 4.0%
District 5	149,388	32,966 22.1%	67,747 45.3%	16,393 11.0%	24,923 16.7%	7,359 4.9%
County	761,065	137,716 18.1%	401,098 52.7%	73,684 9.7%	115,599 15.2%	32,968 4.3%

Prepared by the Department of Conservation and Development - GIS Group for the November 9th, 2021 Board of Supervisors Public Hearing.  
Data Source: 2021 California State Redistricting Data, Adjusted P.L 94-171 Redistricting Data and block level Citizen Voting Age Population (CVAP), DistrictR online mapping submissions

**Concept Total Variation**

# 10.55%

**2021 Population**  
Population: 1,168,069  
Equal Distribution: 233,614  
Citizen Voting Age Population (CVAP): 761,065

District	Population	Variance	Percent
District 1	236,024	2,411	1.03%
District 2	233,984	371	0.16%
District 3	248,091	14,478	6.20%
District 4	223,444	(10,169)	-4.35%
District 5	226,526	(7,087)	-3.03%

**Written Description from Submission**

Keeps all cities whole and allows with Clayton being put back with Concord and WC

