



# WALDIE PLAZA AND EVENT CENTER

OLD DOWNTOWN, ANTIOCH CALIFORNIA

CONCEPT DESIGN | JUNE 16, 2016



## DESIGN GOALS:

- Visually exciting design
- Accommodate wide range of uses including events and recreation
- Provide code-compliant accessible routes and flatter usable areas
- Develop waterfront promenade
- Emphasize views from City Hall to water
- Activate potential café space
- Materials and forms that relate to maritime theme



SCOPE BOUNDARY

WALDIE PLAZA AND EVENT CENTER, ANTIOCH

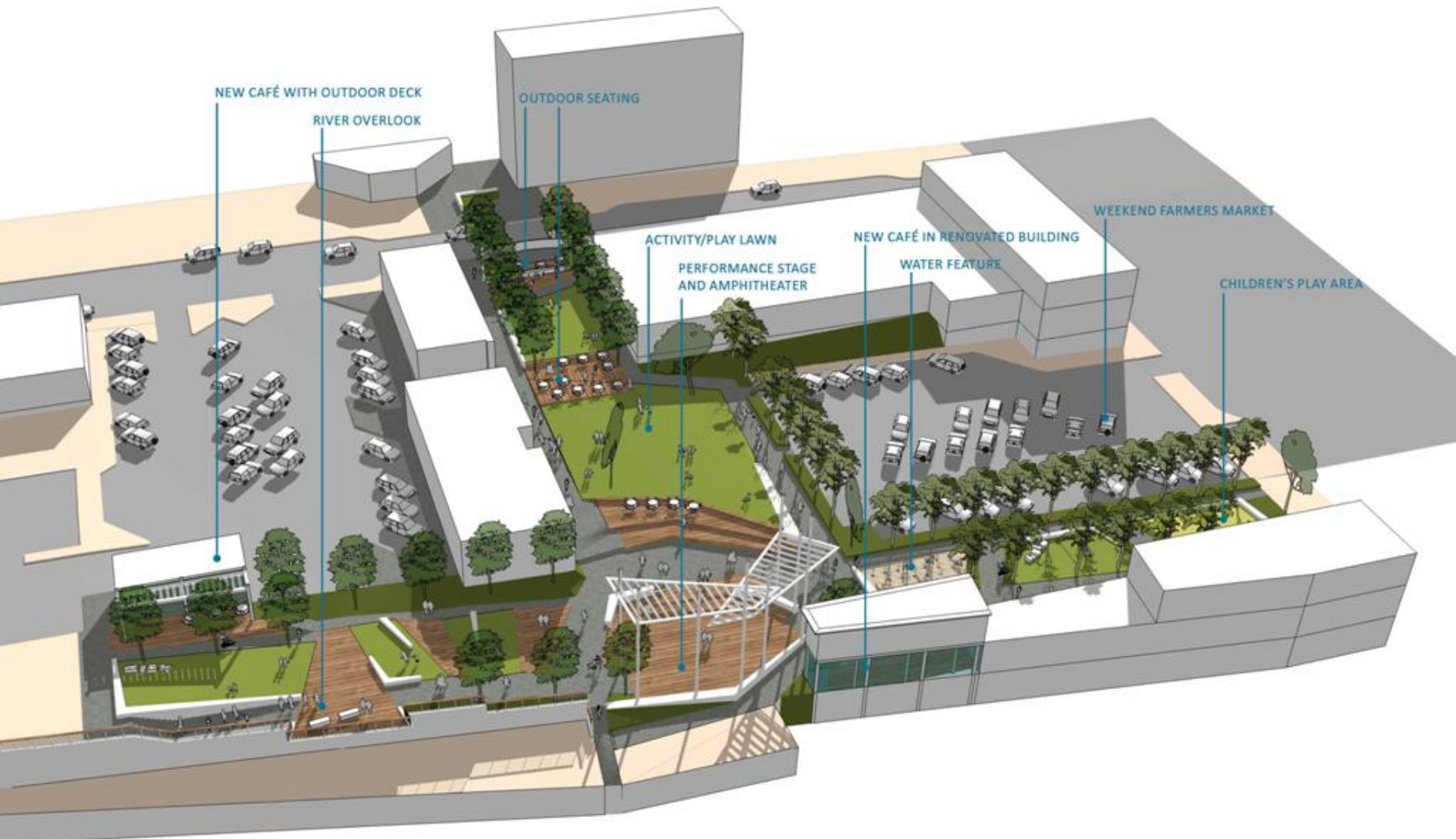




ILLUSTRATIVE PLAN

WALDIE PLAZA AND EVENT CENTER, ANTIOCH





NEW CAFÉ WITH OUTDOOR DECK

RIVER OVERLOOK

OUTDOOR SEATING

ACTIVITY/PLAY LAWN

PERFORMANCE STAGE  
AND AMPHITHEATER

NEW CAFÉ IN RENOVATED BUILDING

WATER FEATURE

WEEKEND FARMERS MARKET

CHILDREN'S PLAY AREA

WALDIE PLAZA AND EVENT CENTER, ANTIOCH



EAST WEST WATERFRONT PROMENADE  
MULTI-PURPOSE AMPHITHEATER SEATING AND OVERLOOK



WALDIE PLAZA AND EVENT CENTER, ANTIOCH



EXPANDED ACTIVITY LAWN AND USABLE PROGRAM AREAS  
CODE-COMPLIANT ACCESSIBLE ROUTES



WALDIE PLAZA AND EVENT CENTER, ANTIOCH



AMPHITHEATER STAGE  
MARITIME-THEMED MATERIALS



WALDIE PLAZA AND EVENT CENTER, ANTIOCH





NEW AND RENOVATED RETAIL AND CAFÉ SPACE  
CHILDREN'S PLAY ELEMENTS AND WATER FEATURE



WALDIE PLAZA AND EVENT CENTER, ANTIOCH



VIEW FROM CITY HALL TO THE RIVER EMPHASIZED AND FRAMED  
CAFÉ SEATING AT 2ND STREET AND WITHIN PLAZA



WALDIE PLAZA AND EVENT CENTER, ANTIOCH

